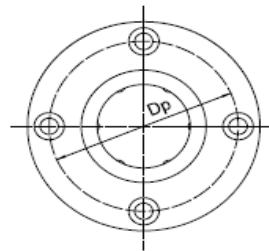
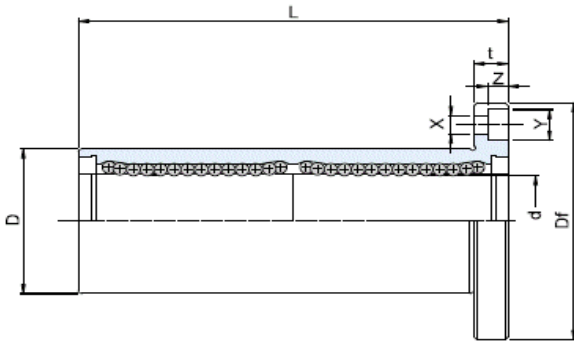
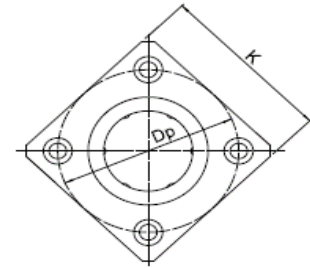


JBFL & JBKL SERIES

ASIAN SIZE



JBFL TYPE



JBKL TYPE

Shaft Size d mm	Model		Major Dimensions and Tolerance													Load Capacity	
	JBFL Type	JBKL Type	d		D		L		Df mm	K mm	t mm	Dp mm	X mm	Y mm	Z mm	Basic Dynamic Load Rating C (N)	Basic Static Load Rating Co (N)
			mm	Tol	mm	Tol	mm	Tol									
8	JBFL-08A	JBKL-08A	8	0 -9	15	0 -11	45	±300	32	25	5	24	3.5	6	3.1	441	804
12	JBFL-12A	JBKL-12A	12		21	0 -13	57	0 -200	42	32	6	32	4.5	7.5	4.4	823	1588
16	JBFL-16A	JBKL-16A	16		28		70		48	37	6	38	4.5	7.5	4.1	1245	2352
20	JBFL-20A	JBKL-20A	20	0 -10	32	0 -16	80	0 -300	54	42	8	43	5.5	9	5.1	1401	2764
25	JBFL-25A	JBKL-25A	25		40		112		62	50	8	51	5.5	9	5.1	1558	3136
30	JBFL-30A	JBKL-30A	30		45		123		74	58	10	60	6.6	11	6.1	2450	5488
40	JBFL-40A	JBKL-40A	40	0 -12	60	0 -19	151		96	75	13	78	9	14	8.1	3479	8232